

# ***HIGH LOCK NUT FOR HYDRAULIC CYLINDERS***

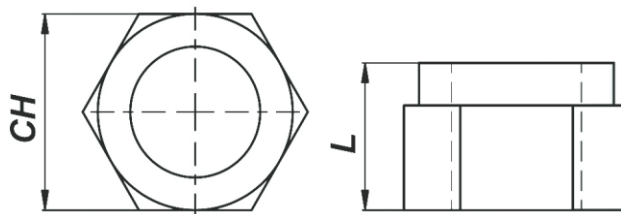


*High Lock Nut for hydraulic cylinders was born from the desire of TRB to give its customers a high quality product.*

**•HIGH LOCK NUT**

*Steel UNI-EN-20898 + polyamide ring.*

*Self-locking nut to fix coupling between piston and rod*



<b>CODE</b>	<b>THREAD</b>	<b>CH</b>	<b>L</b>
<b>GD1415A</b>	<b>M14x1,5</b>	<b>22</b>	<b>16</b>
<b>GD2015A</b>	<b>M20x1,5</b>	<b>30</b>	<b>23</b>
<b>GD2420A</b>	<b>M24x2</b>	<b>36</b>	<b>27</b>
<b>GD2720A</b>	<b>M27x2</b>	<b>41</b>	<b>30</b>
<b>GD3320A</b>	<b>M33x2</b>	<b>50</b>	<b>35</b>