

THREADED BOSS FOR HYDRAULIC CYLINDERS

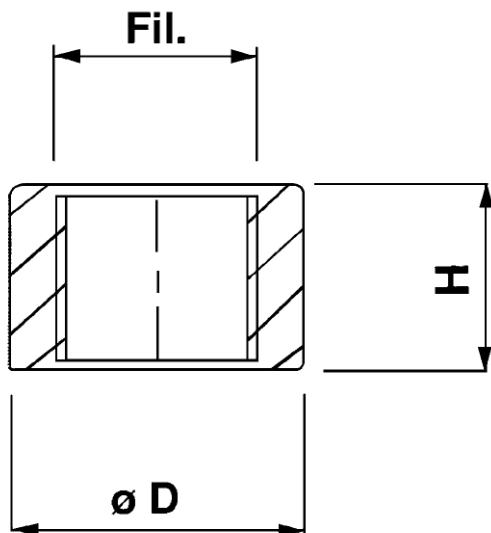


Threaded boss for hydraulic cylinders was born from the desire of TRB to give its customers a high quality product. The version with mounted seals guarantees a quick solution in the construction / replacement of hydraulic cylinders.

• **THREADED BOSS**

Made in S235

Female threaded oil ports both in BSP and metrical system, to be welded on hydraulic cylinders for oil inlet. Oil ports layout having chamfered edges, to be used sealing washer



CODE	FIL	H	ø D
BOR114	1/4"	16	22
BOR318	3/8"	17	25
BOR112	1/2"	18	30