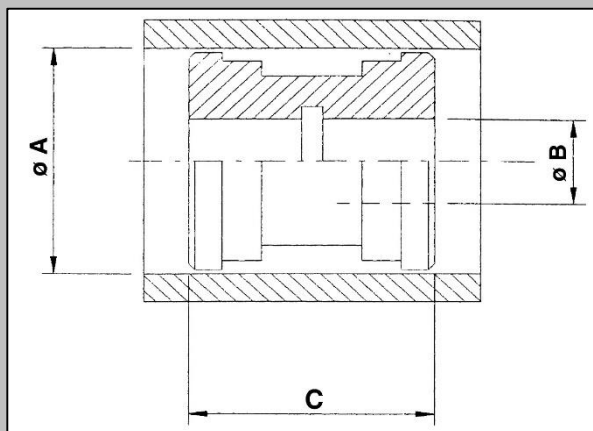


PISTONE
PISTON

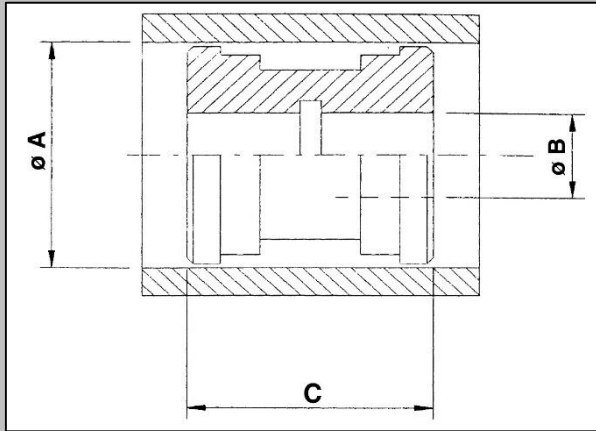


- MATERIALE Acciaio AVP/AVZ
- MATERIAL Steel AVP/AVZ

ALESAGGIO BORE	CODICE CODE	Ø A	Ø B	C	PESO WEIGHT kg.	Q.TA' MINIMA (E/O MULTIPLI) MINIMUM Q.TY (AND/OR MULTIPLES)
Ø 32	PIS321530	32	15	30	0,09	12 pz/pcs
Ø 35	PIS351540	35	15	40	0,16	9 pz/pcs
Ø 40	PIS401540	40	15	40	0,23	9 pz/pcs
Ø 45	PIS451540	45	15	40	0,31	9 pz/pcs
Ø 50	PIS501540	50	15	40	0,37	9 pz/pcs
	PIS502040	50	20	40	0,35	9 pz/pcs
Ø 55	PIS552040	55	20	40	0,42	8 pz/pcs
Ø 60	PIS602050	60	20	50	0,71	7 pz/pcs
	PIS602445	60	24	50	0,56	8 pz/pcs
	PIS602750	60	27	50	0,61	7 pz/pcs
Ø 63	PIS632050	63	20	50	0,70	7 pz/pcs
	PIS632750	63	27	50	0,65	7 pz/pcs



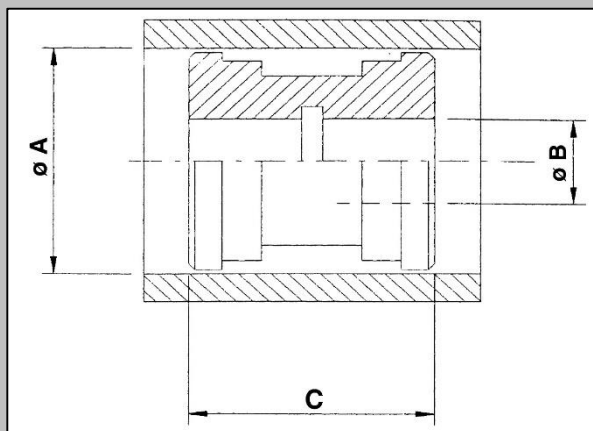
PISTONE PISTON



- MATERIALE Acciaio AVP/AVZ
- MATERIAL Steel AVP/AVZ

ALESAGGIO BORE	CODICE CODE	Ø A	Ø B	C	PESO WEIGHT kg.	Q.TA' MINIMA (E/O MULTIPLI) MINIMUM Q.TY (AND/OR MULTIPLES)
Ø 65	PIS652050	65	20	50	0,88	7 pz/pcs
	PIS652445	65	24	45	0,72	8 pz/pcs
	PIS652550	65	25	50	0,70	7 pz/pcs
Ø 70	PIS702050	70	20	50	0,81	7 pz/pcs
	PIS702445	70	24	45	0,76	8 pz/pcs
	PIS702750	70	27	50	0,71	7 pz/pcs
Ø 75	PIS752445	75	24	45	0,93	8 pz/pcs
	PIS752750	75	27	50	1,00	7 pz/pcs
Ø 80	PIS802445	80	24	45	1,11	8 pz/pcs
	PIS802750	80	27	50	1,23	7 pz/pcs
	PIS803050	80	30	50	1,25	7 pz/pcs
Ø 90	PIS902750	90	27	50	1,66	7 pz/pcs
	PIS903350	90	33	50	1,55	7 pz/pcs

PISTONE
PISTON



- MATERIALE Acciaio AVP/AVZ
- MATERIAL Steel AVP/AVZ

ALESAGGIO BORE	CODICE CODE	Ø A	Ø B	C	PESO WEIGHT kg.	Q.TA' MINIMA (E/O MULTIPLI) MINIMUM Q.TY (AND/OR MULTIPLES)
Ø 100	PIS1002750	100	27	50	2,06	7 pz/pcs
	PIS1003350	100	33	50	1,95	7 pz/pcs
Ø 110	PIS1103350	110	33	50	2,49	-
	PIS1104050	110	40	50	2,33	-
Ø 120	PIS1204050	120	40	50	2,95	-
Ø 125	PIS1254050	125	40	50	3,24	-
Ø 140	PIS1404058	140	40	58	5,04	-
Ø 150	PIS1504058	150	40	58	5,67	-
Ø 160	PIS1605158	160	51	58	6,60	-